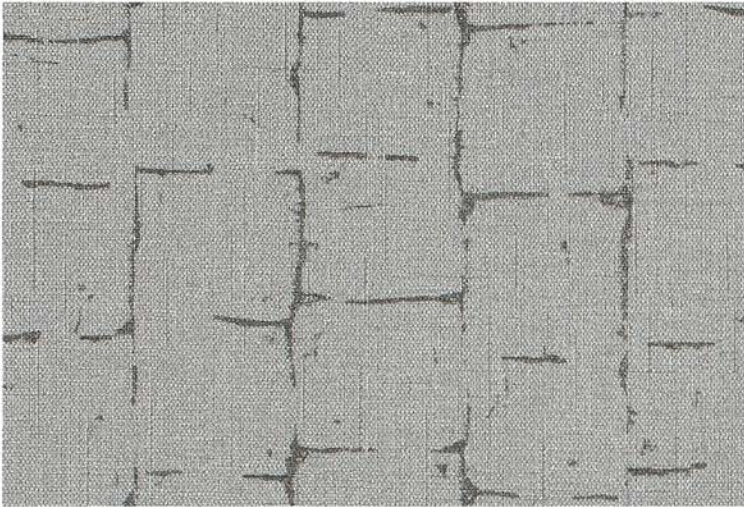


# TOWER

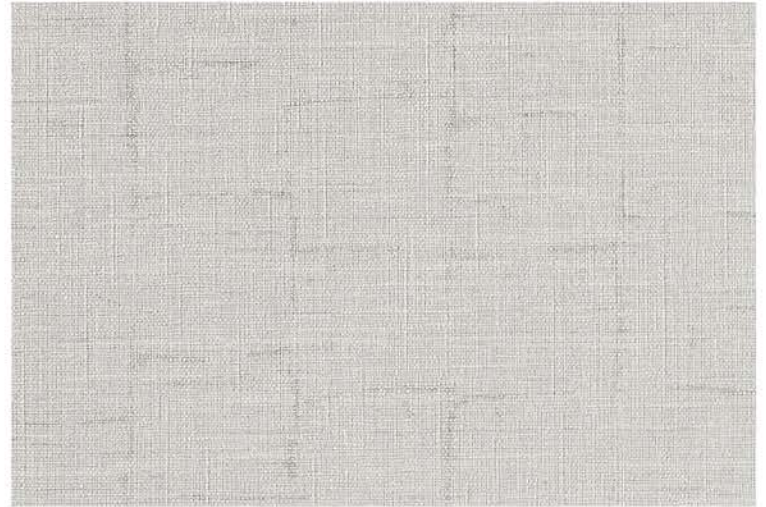
Go Gilded



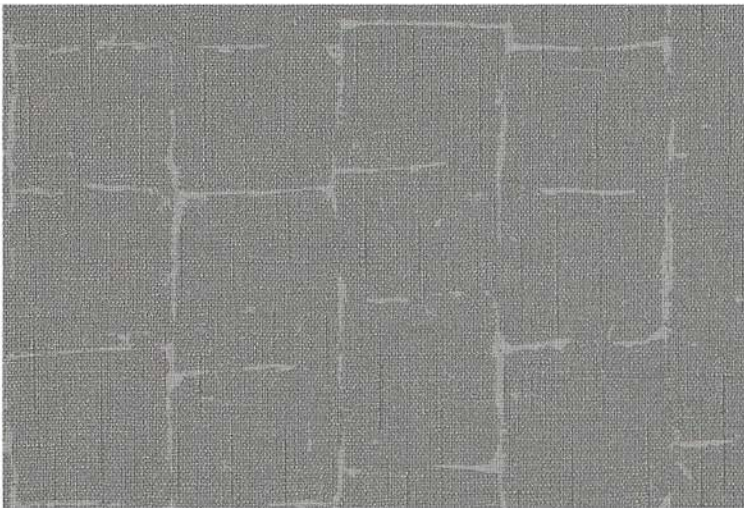
52" / Type II / 20 oz. low voc T2-GD-07 Golden Essence



T2-GD-01 Shadow Blocks



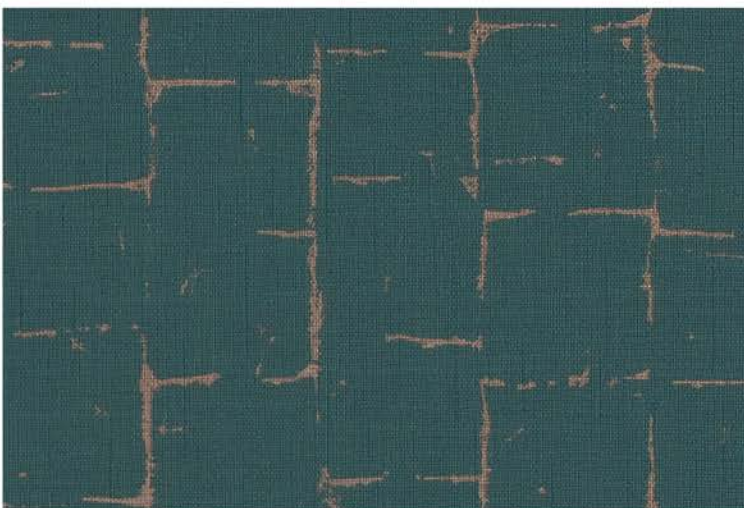
T2-GD-04 Silver Touch



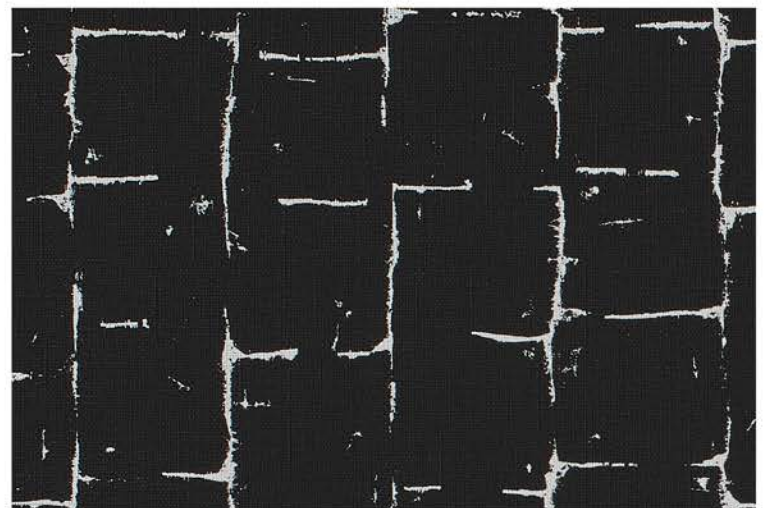
T2-GD-02 Grey Resin



T2-GD-05 Spun Cotton



T2-GD-03 Plum



T2-GD-06 Cotton Boll

Go Gilded



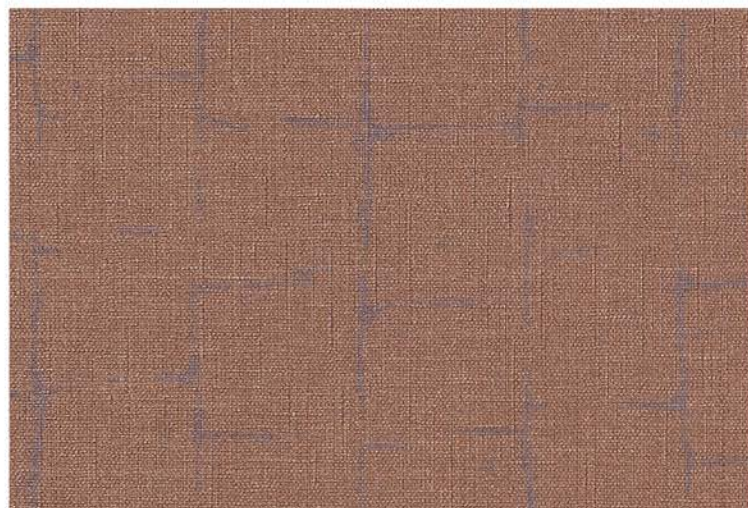
T2-GD-07 Golden Essence



T2-GD-10 Miami Sunset



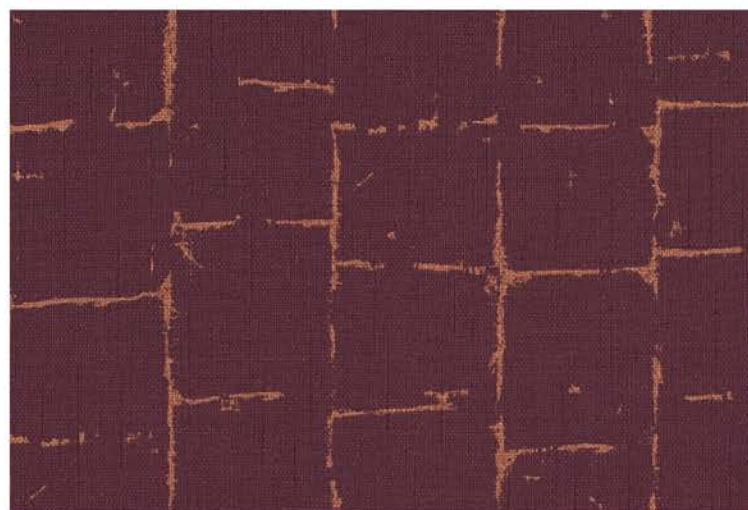
T2-GD-08 Golden Pumice



T2-GD-11 Peeking Plum



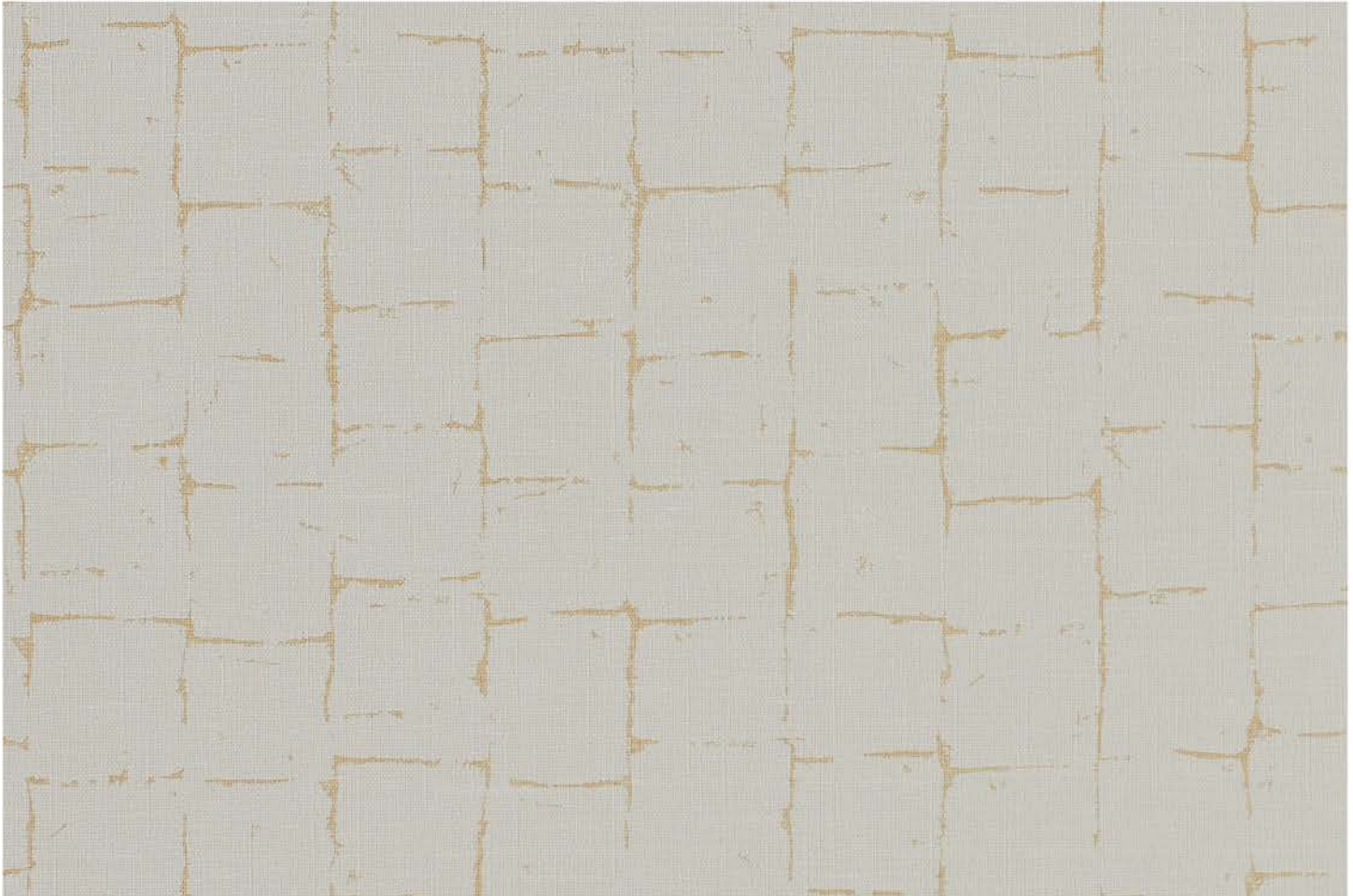
T2-GD-09 Sandy Leaf



T2-GD-12 Copper Berry

# TOWER

52" / Type II / 20 oz. low voc recycled content



T2-GD-07 Golden Essence

## Go Gilded

### Physical Properties

WEIGHT: 20.0 oz. PLY/620 G/PLM 13.3 oz. PSY/451 G/PSM  
BACKING: Osnaburg WIDTH: 52"/132 cm  
MATCH: Straight match REPEAT: 18" h x 52" w.

For pattern details and hanging instructions, contact distributor.

Custom colors, weights, and micro venting available  
Meets or exceeds Federal Specification CCC-W-408D for Type II

### Environmental

- Low VOC, California section 01350 IAQ
- 10% Recycled content
- Non-Phthalate
- NSF/ANSI 342 certified
- EPD/HPD
- California Prop 65, no labeling required

### Cleanability

Inherent anti-microbial protection  
Withstands hospital-grade cleaners & disinfectants  
Available as a custom with **INVISICAP** | complete **chemical** protection

### Warranty

5 year warranty against manufacturing defects.  
Additional information is available [www.towerwallcovering.com](http://www.towerwallcovering.com)