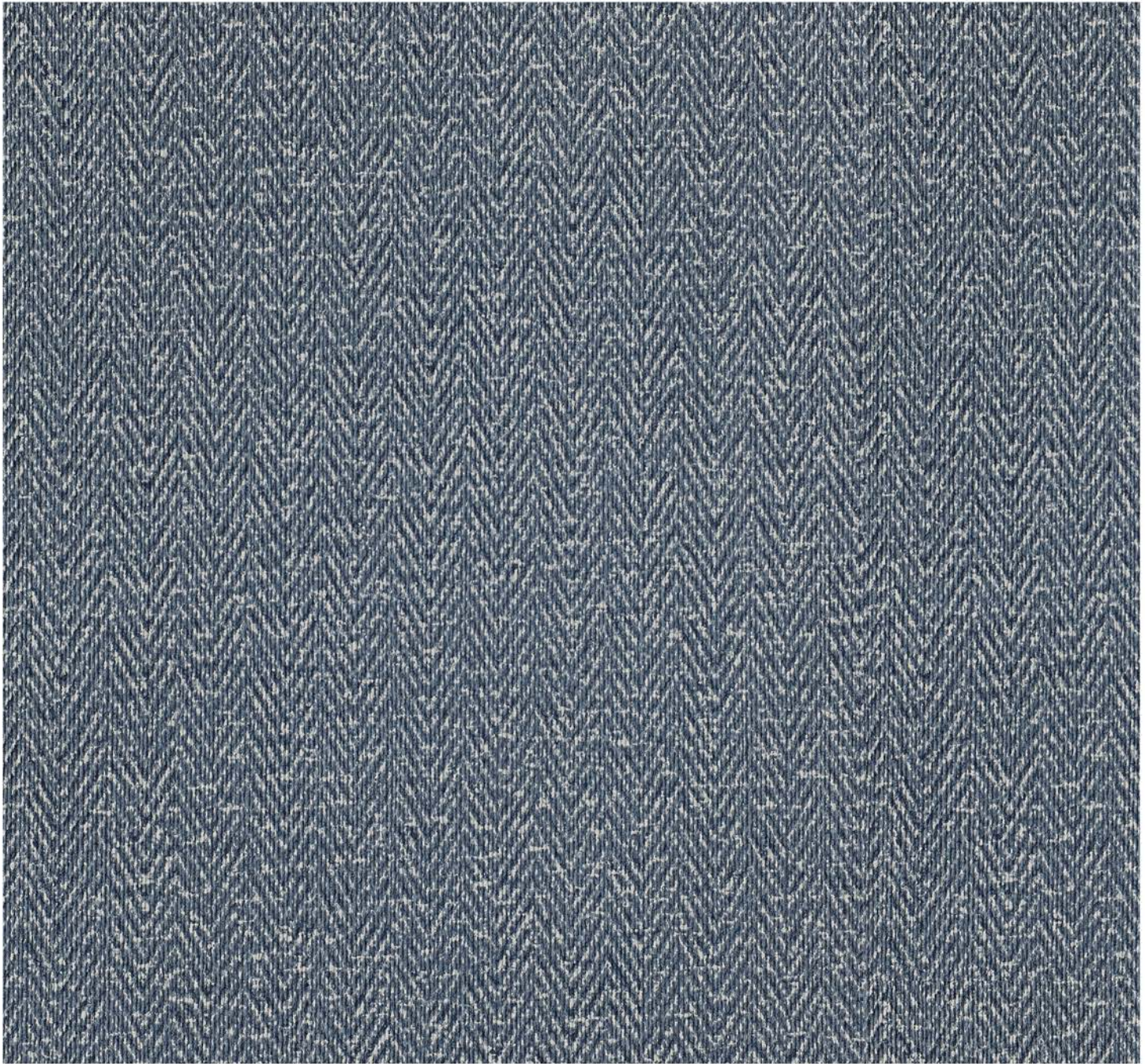
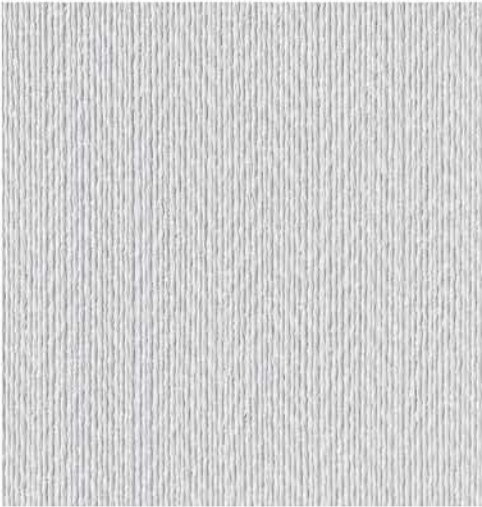


TOWER

Herringbone Row



54" / Type II / 20 oz. low voc T2-HR-17 Yacht



T2-HR-01 Fog



T2-HR-04 Frost



T2-HR-07 Bone



T2-HR-02 Gris



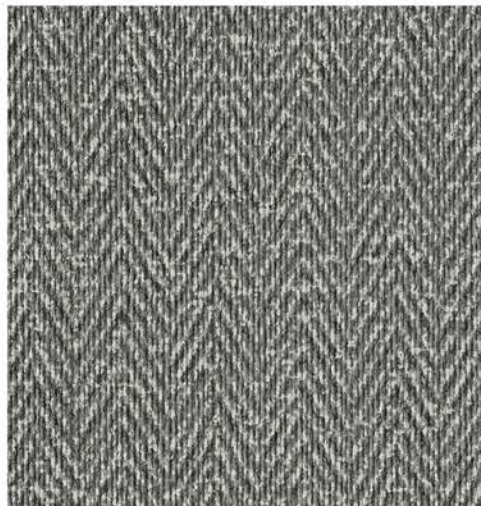
T2-HR-05 Dapple



T2-HR-08 Dove



T2-HR-03 Soot



T2-HR-06 Anvil



T2-HR-09 Taupe

Herringbone Row



T2-HR-10 Blond



T2-HR-13 Meadow



T2-HR-16 Placid



T2-HR-11 Linen



T2-HR-14 Ginger



T2-HR-17 Yacht



T2-HR-12 Vintage



T2-HR-15 Plum



T2-HR-18 Marino

TOWER

54" / Type II / 20 oz. low voc recycled content



TT2-HR-17 Yacht

Herringbone Row

Physical Properties

WEIGHT: 20.0 oz. PLY/620 G/PLM 13.3 oz. PSY/451 G/PSM

BACKING: Osnaburg WIDTH: 54"/137 cm

MATCH: Reverse, random match

For pattern details and hanging instructions, contact distributor.

Custom colors, weights, and micro venting available

Meets or exceeds Federal Specification CCC-W-408D for Type II

Environmental

- Low VOC, California section 01350 IAQ
- 10% Recycled content
- Non-Phthalate
- NSF/ANSI 342 certified
- EPD/HPD
- California Prop 65, no labeling required

Cleanability

Inherent anti-microbial protection

Withstands hospital-grade cleaners & disinfectants

Available as a custom with **INVISICAP** | complete chemical protection

Warranty

5 year warranty against manufacturing defects.

Additional information is available www.towerwallcovering.com