



All About Linen

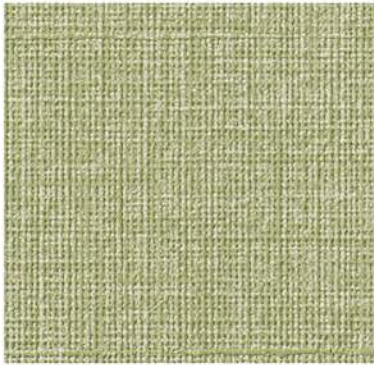
BOLTA



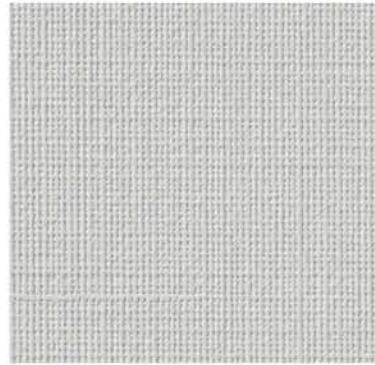
Type II / 20 oz. low voc recycled content

Greige **BB-AL-15**

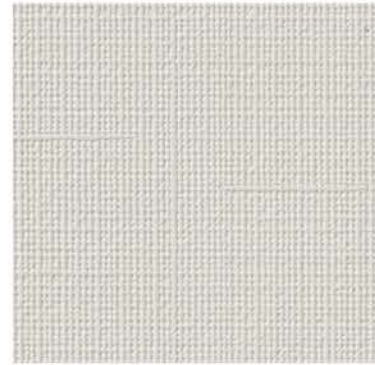
# All About Linen



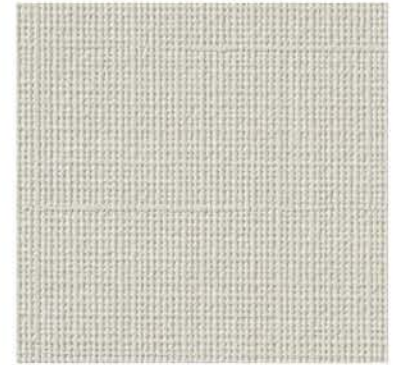
Kiwi **BB-AL-01**



Skylight **BB-AL-05**



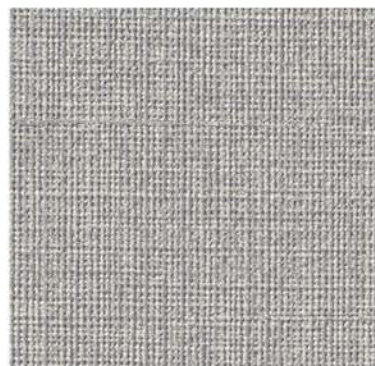
White **BB-AL-09**



Vanilla **BB-AL-13**



Waterfall **BB-AL-02**



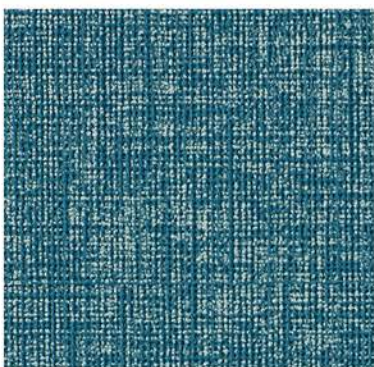
Cobblestone **BB-AL-06**



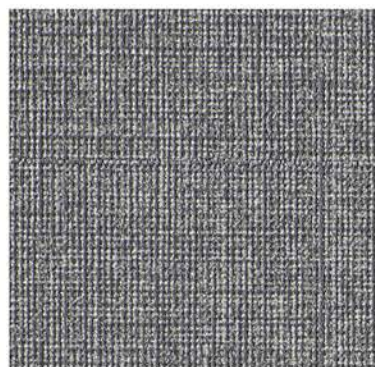
Pale Grey **BB-AL-10**



Cloud Cover **BB-AL-14**



Deep Teal **BB-AL-03**



Titanium **BB-AL-07**



Charcoal **BB-AL-11**



Greige **BB-AL-15**



Royal Blue **BB-AL-04**



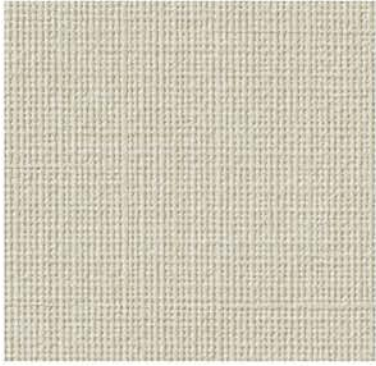
Denim **BB-AL-08**



Pitch-Black **BB-AL-12**



Dusk **BB-AL-16**



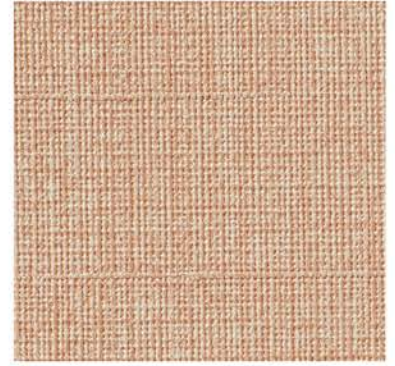
Calming Cream **BB-AL-17**



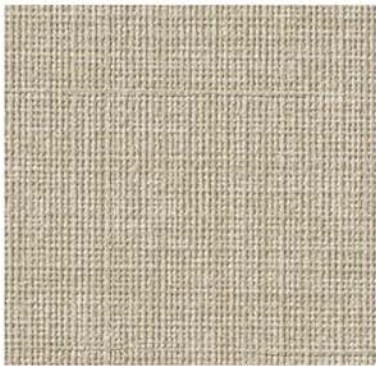
Almond **BB-AL-21**



Rose Beige **BB-AL-25**



Sorbet **BB-AL-29**



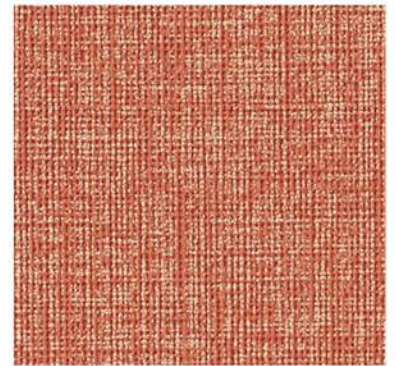
Chickpea **BB-AL-18**



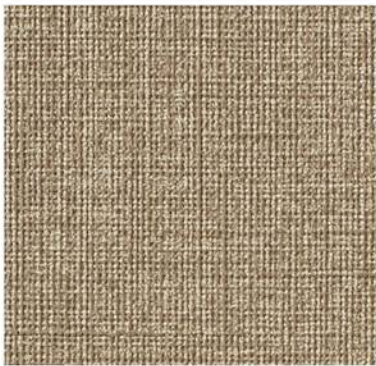
Bamboo **BB-AL-22**



Blushing **BB-AL-26**



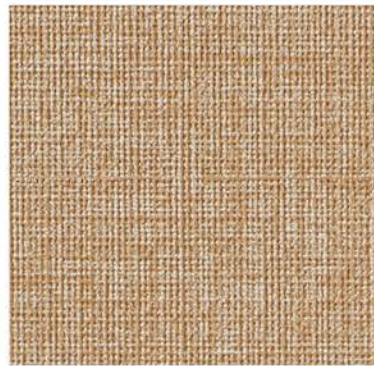
Coral **BB-AL-30**



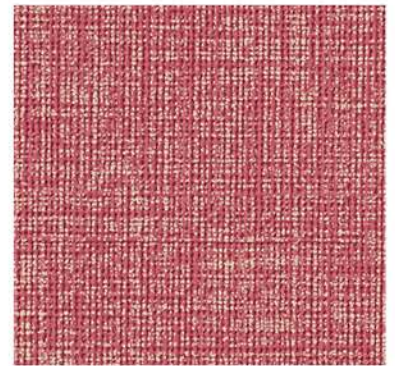
Praline **BB-AL-19**



Nutmeg **BB-AL-23**



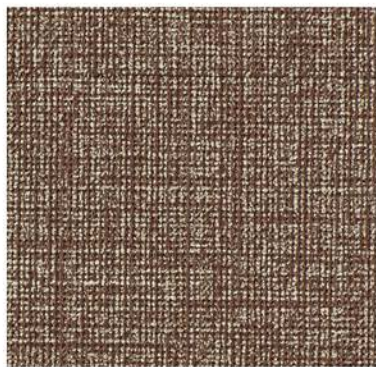
Caramel **BB-AL-27**



Petunia **BB-AL-31**



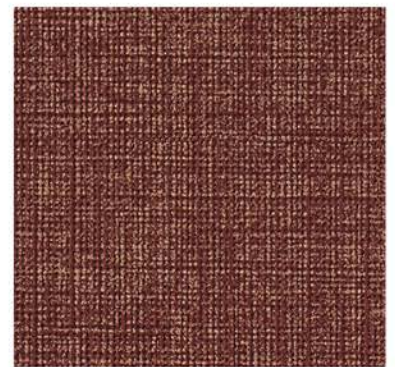
Dark Truffle **BB-AL-20**



Java **BB-AL-24**



Honeycomb **BB-AL-28**



Ruby **BB-AL-32**



Greige **BB-AL-15**

**Physical Properties**

WEIGHT: 20.0 oz. PLY/620 G/PLM 13.3 oz. PSY/451 G/PSM  
BACKING: Osnaburg WIDTH: 54"/137cm MATCH: Straight, random

Meets or exceeds Federal Specification CCC-W-408D  
Custom colors, weights, and micro venting available

Product Specifications, Fire Safety & Ratings, Environment & Health  
and Warranty is available at [www.boltawallcovering.com](http://www.boltawallcovering.com)

**Environmental**

- Low VOC, California section 01350 IAQ
- 10% Recycled content
- Non-Phthalate
- NSF/ANSI 342 certified
- EPD/HPD
- California Prop 65, no labeling required

**Cleanability**

Inherent anti-microbial protection  
Withstands hospital-grade cleaners & disinfectants  
Available as a custom with **INVISICAP** | complete chemical protection