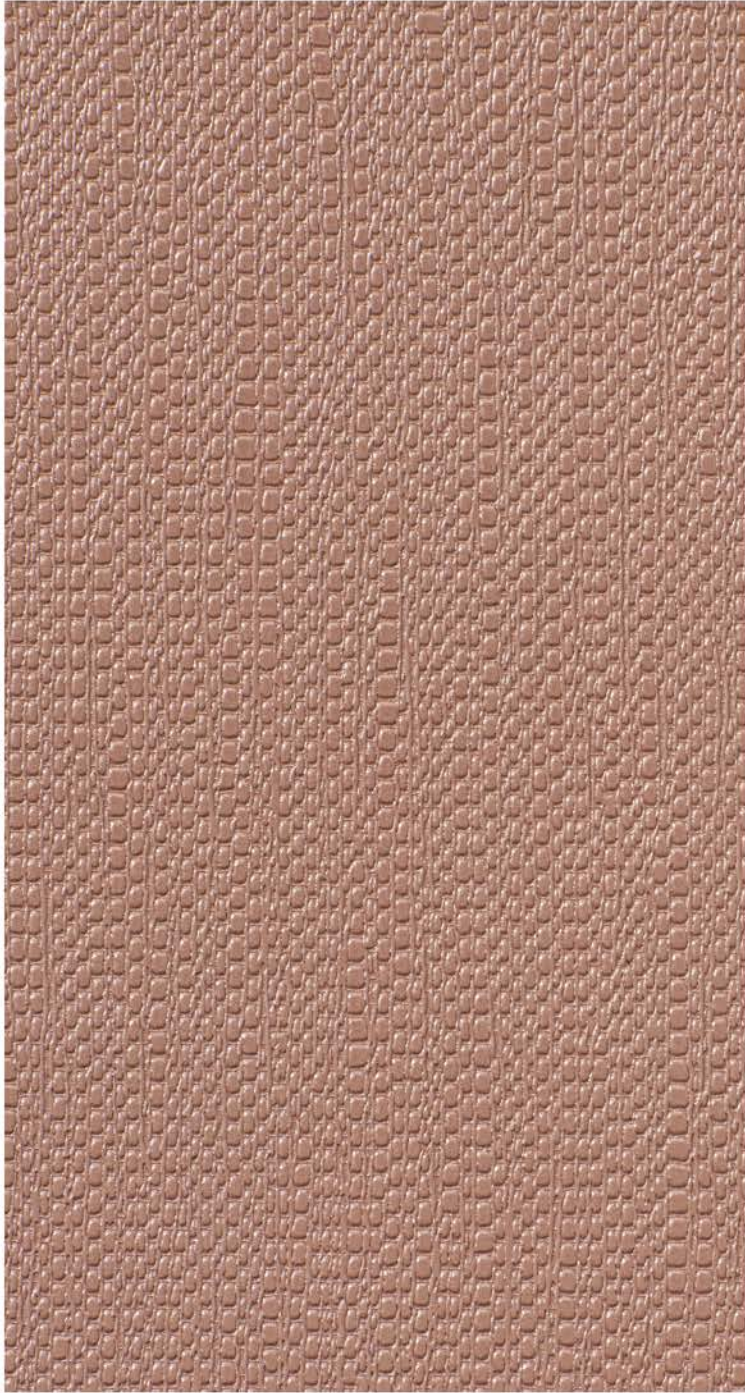


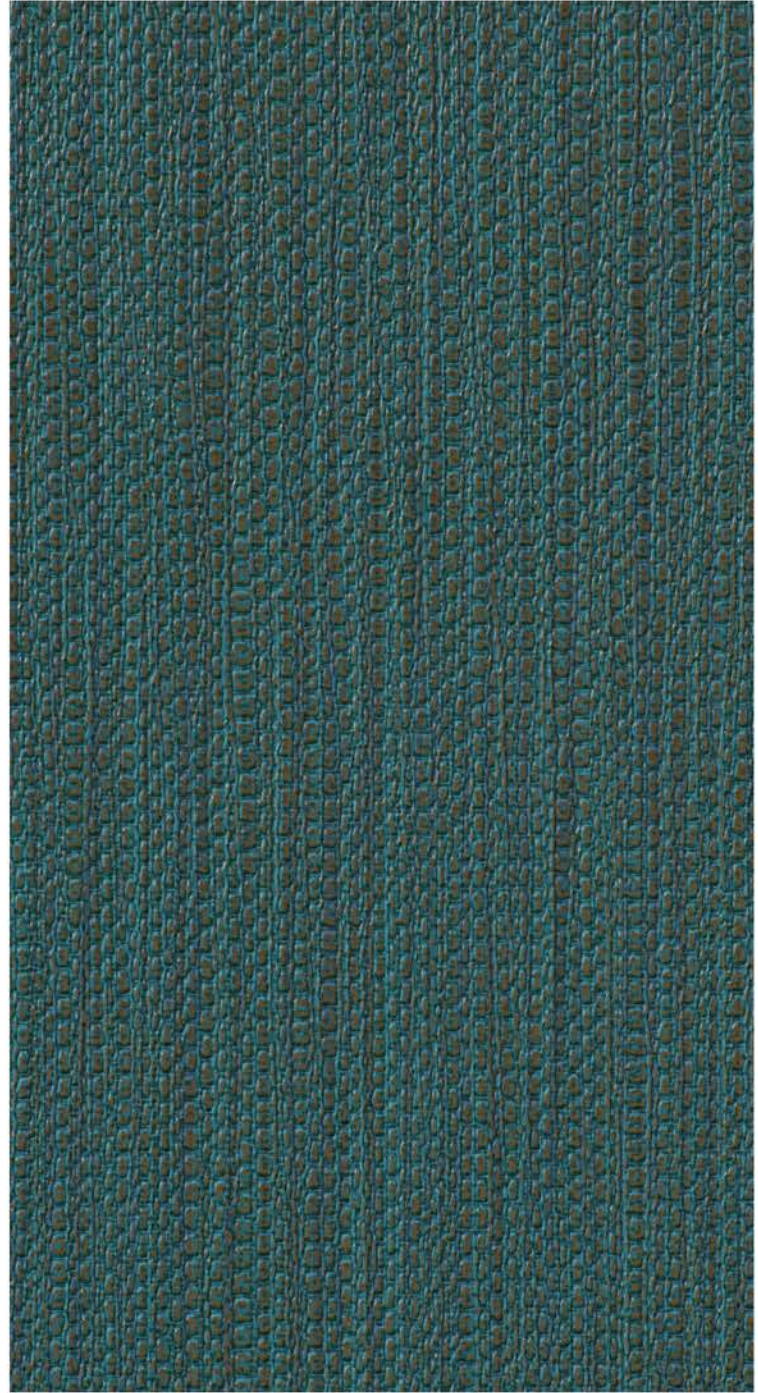
BOLTA

Bead it!



Rondelle Rose **BB-BD-15**

Bead Bling



Azurite **BB-LG-08**

Bead It!



Delica **BB-BD-01**



White Rice **BB-BD-04**



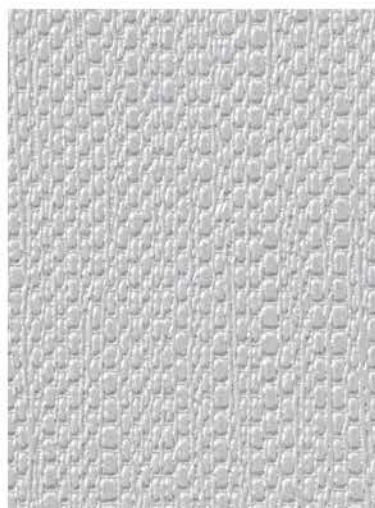
Tear Drop **BB-BD-07**



Capsule Cream **BB-BD-10**



Garnet **BB-BD-02**



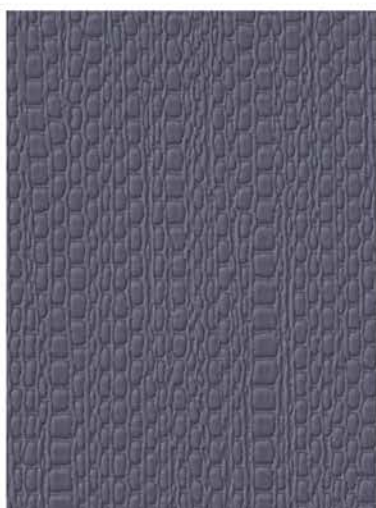
Silver Plate **BB-BD-05**



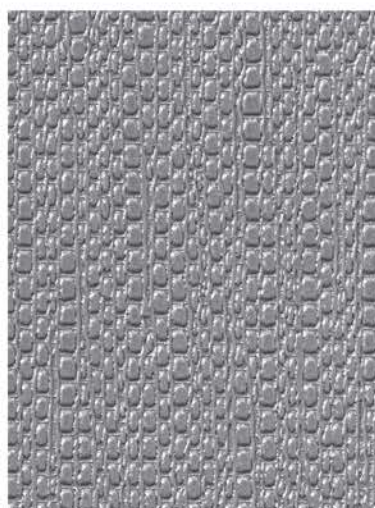
Coin **BB-BD-08**



Pebble Gleam **BB-BD-11**



Navy Button **BB-BD-03**



Foundry **BB-BD-06**



Blackstone **BB-BD-09**



Bronze Nugget **BB-BD-12**

Bead Bling



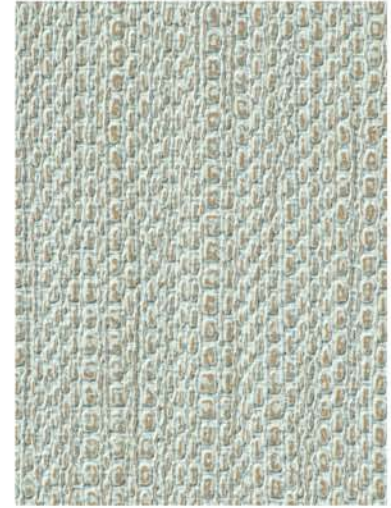
Golden Saucer **BB-BD-13**



Cream Cone **BB-LG-01**



Selenite White **BB-LG-04**



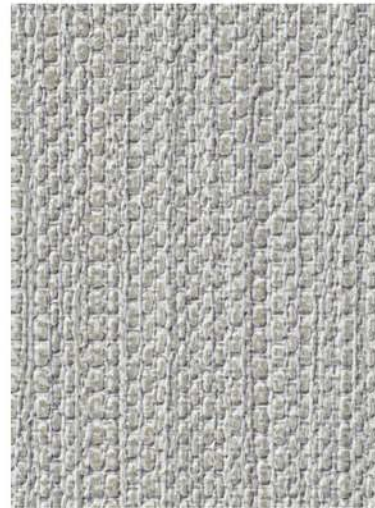
Glass **BB-LG-07**



Sun Drum **BB-BD-14**



Geige Gear **BB-LG-02**



Pencil **BB-LG-05**



Azurite **BB-LG-08**



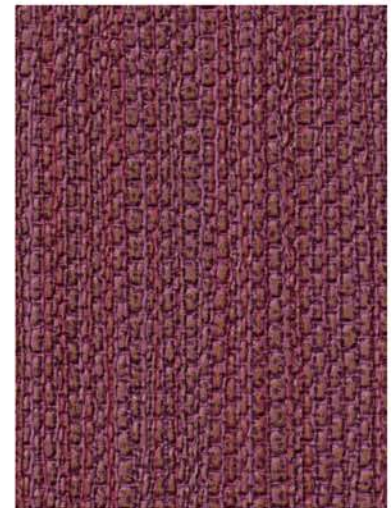
Rondelle Rose **BB-BD-15**



Chanton Shadow **BB-LG-03**



Kyanite Black **BB-LG-06**



Fuchsia Facet **BB-LG-09**

Bead it!

BOLTA



Rondelle Rose **BB-BD-15**



Bead Bling Azurite **BB-LG-08**

Product Specifications, Fire Safety & Ratings, Environment & Health and Warranty is available at www.boltawallcovering.com

Physical Properties

WEIGHT: 20 oz. PLY, 620 G/PLM 13.3 oz. PSY, 451 G/PSM
BACKING: Osnaburg MATCH: Reverse random
WIDTH: **Bead It** 54"/137cm **Bead Bling** 52"/132cm

Meets or exceeds Federal Specification CCC-W-408D
Custom colors, weights, and micro venting available

Environmental

- Low VOC, California section 01350 IAQ
- 10% Recycled content
- Non-Phthalate
- NSF/ANSI 342 certified
- EPD/HPD
- California Prop 65, no labeling required

Cleanability

Inherent anti-microbial protection
Withstands hospital-grade cleaners & disinfectants
Bead It available as a custom with **INVISICAP** | complete chemical protection