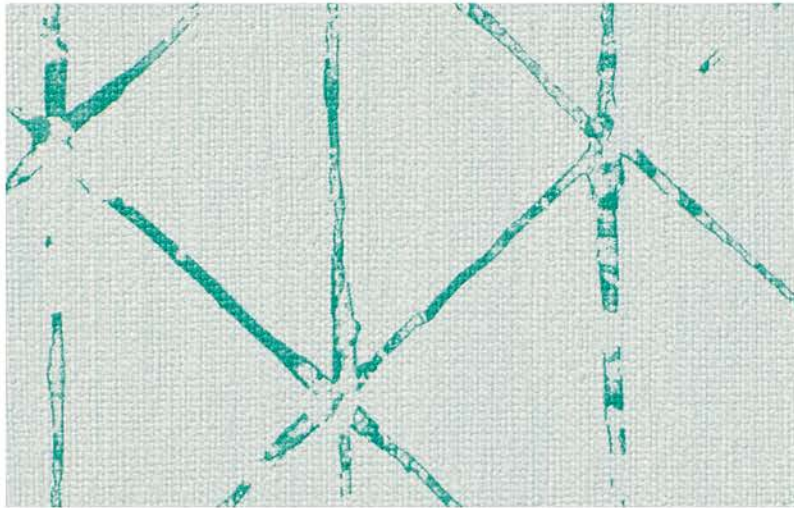
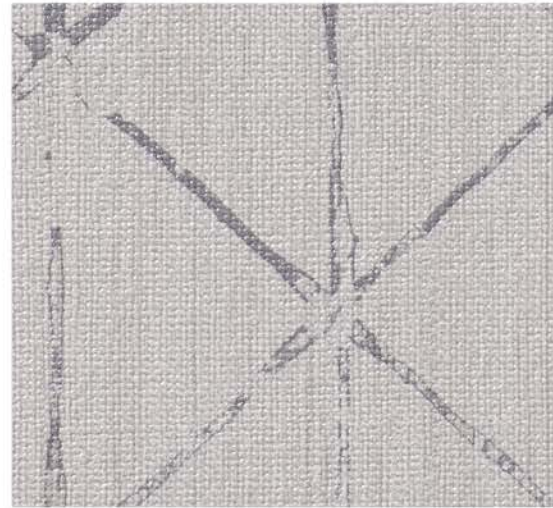




Grate Expectations



Gargery Green **BB-GE-01**



Silver File **BB-GE-04**



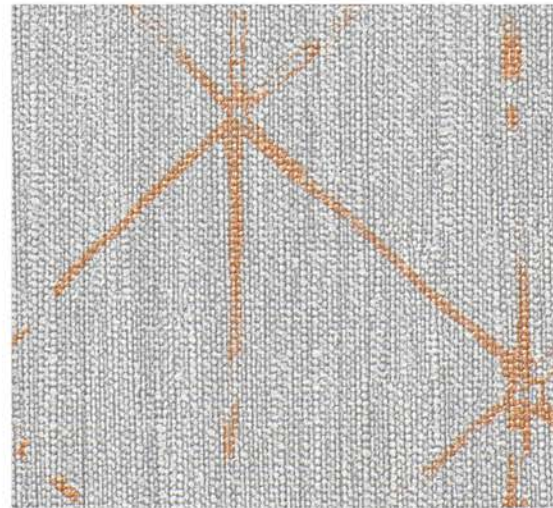
BB-AL-06



Blue Boar **BB-GE-02**



BB-SK-37



Forge Grey **BB-GE-05**



BB-PL-26



Shadow Navy **BB-GE-03**



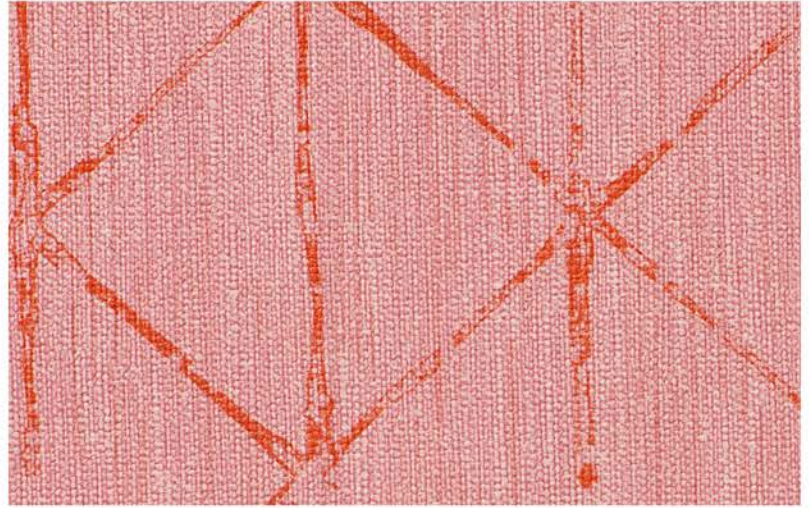
BB-SR-27



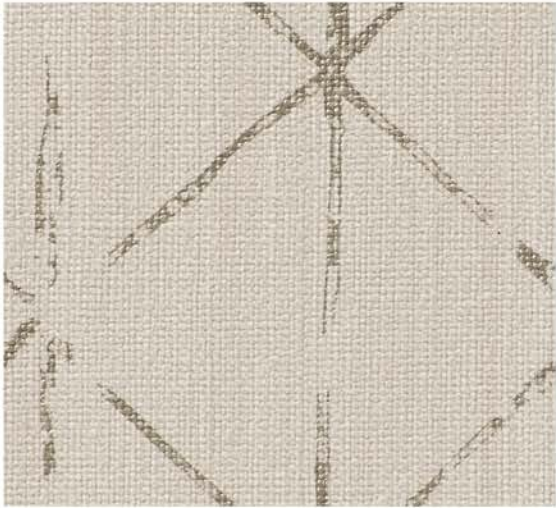
Havisham's Sun **BB-GE-09**



BB-PL-25



Pip's Pink **BB-GE-10**



Honorable Cream **BB-GE-06**



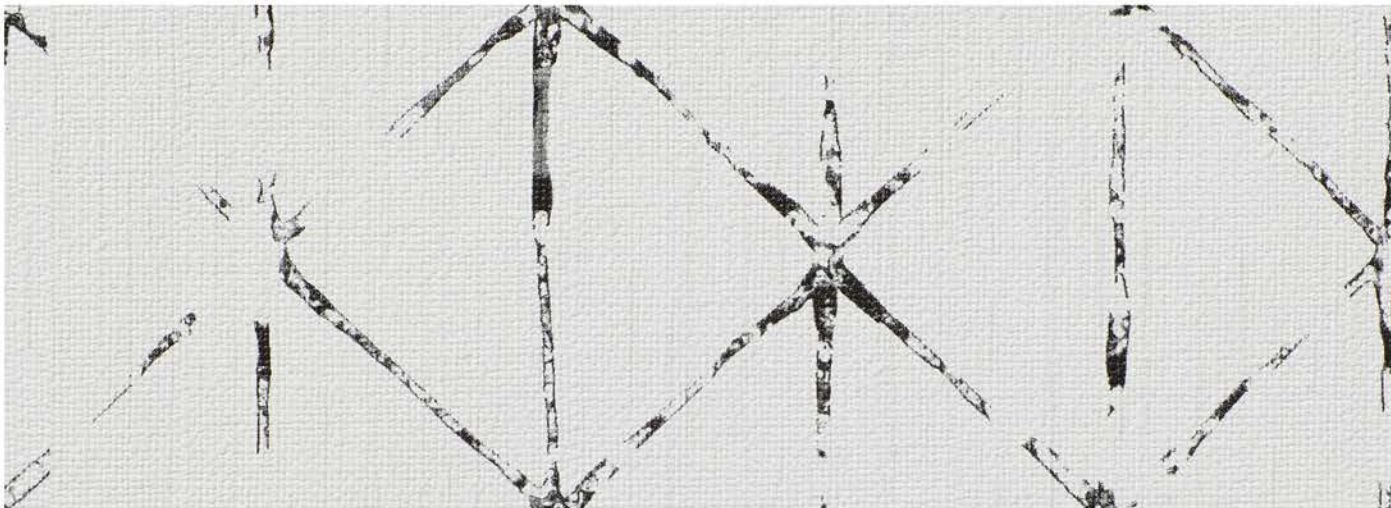
BB-AL-17



Wheelwright **BB-GE-07**



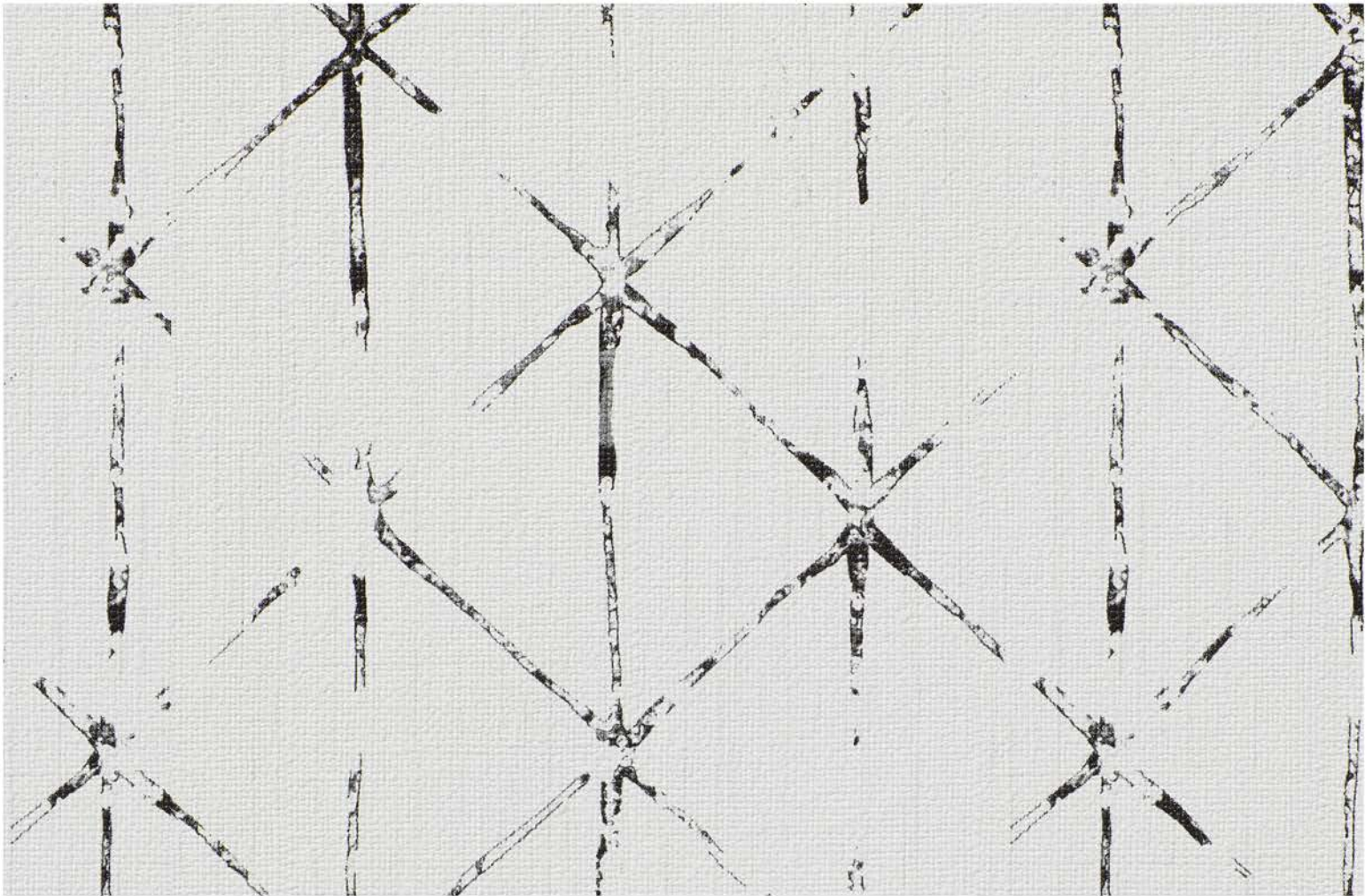
BB-TW-23



Whimple White **BB-GE-08**



BB-AL-12



Whimpe White **BB-GE-08**



Shadow Navy **BB-GE-03**

Product Specifications, Fire Safety & Ratings, Environment & Health and Warranty is available at www.boltawallcovering.com

Physical Properties

WEIGHT: 20.0 oz. PLY/620 G/PLM 13.3 oz. PSY/451 G/PSM
BACKING: Non-Woven WIDTH: 52"/132cm MATCH: Reverse, match
REPEAT: 18" h x 52" w

Meets or exceeds Federal Specification CCC-W-408D
Custom colors, weights, and micro venting available

Environmental

- Low VOC, California section 01350 IAQ
- 10% Recycled content
- Non-Phthalate
- NSF/ANSI 342 certified
- EPD/HPD
- California Prop 65, no labeling required

Cleanability

Inherent anti-microbial protection
Withstands hospital-grade cleaners & disinfectants
Available as a custom with **INVISICAP** | complete chemical protection