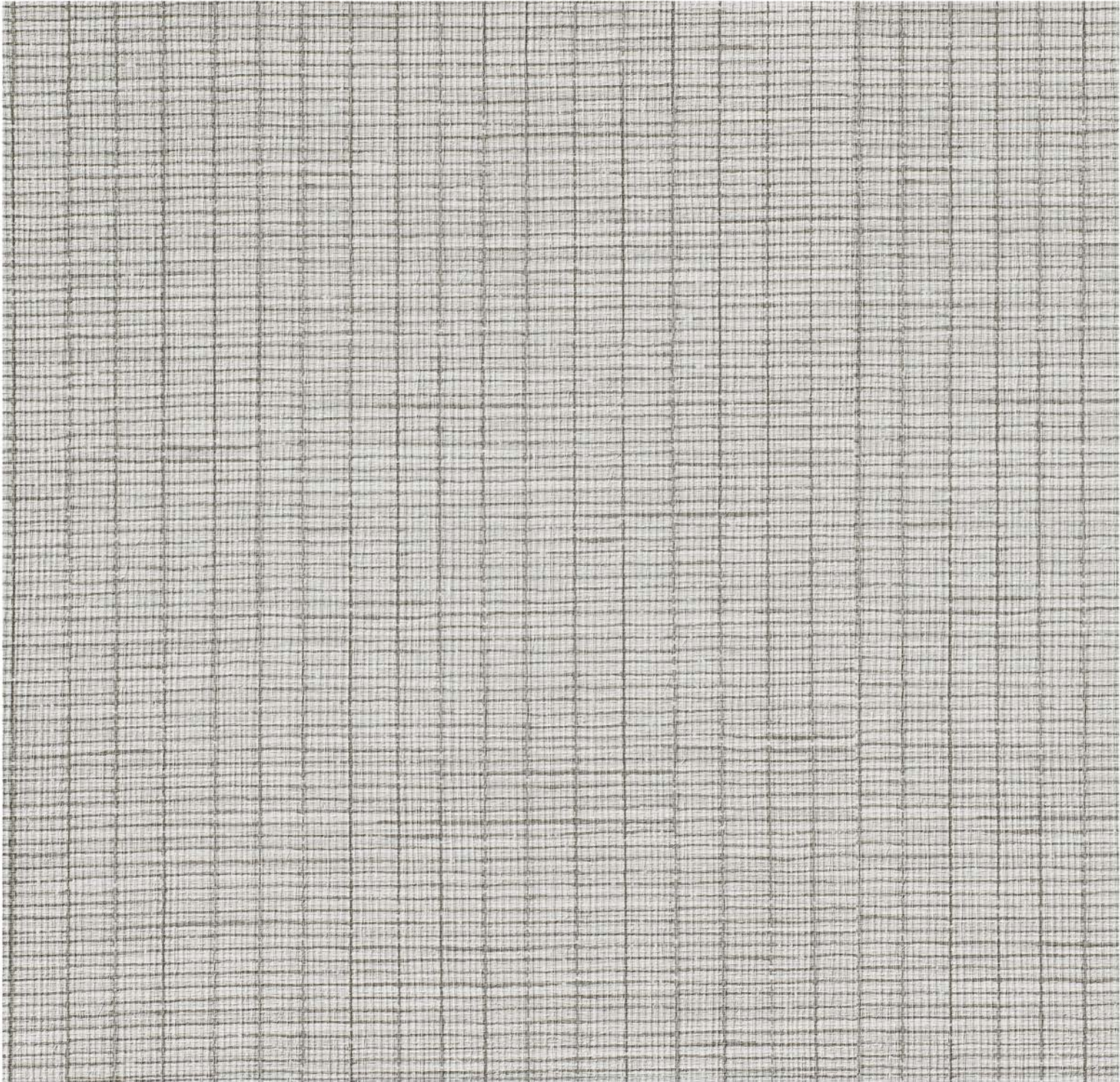


Pinstripe Hype

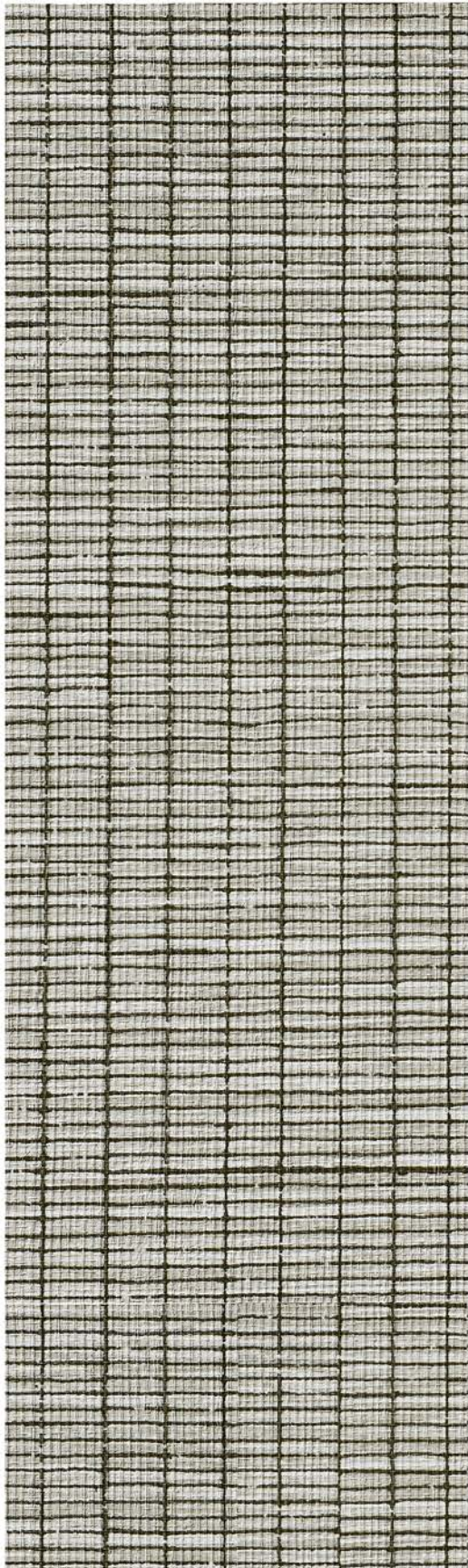
BOLTA



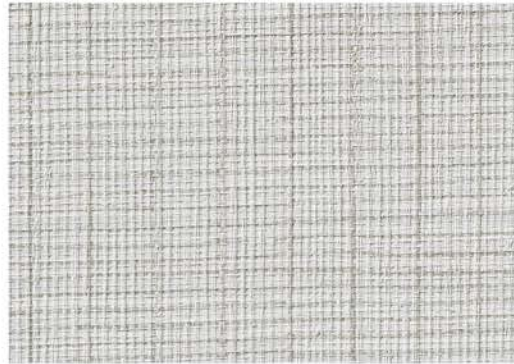
Type II / 20 oz. low voc recycled content

Chalk Lines **BB-PH-06**

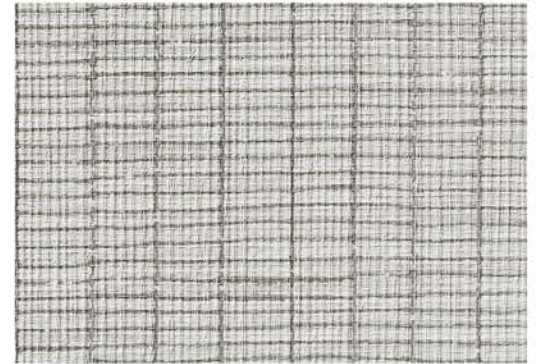
Pinstripe Hype



Salt & Pepper **BB-PH-01**



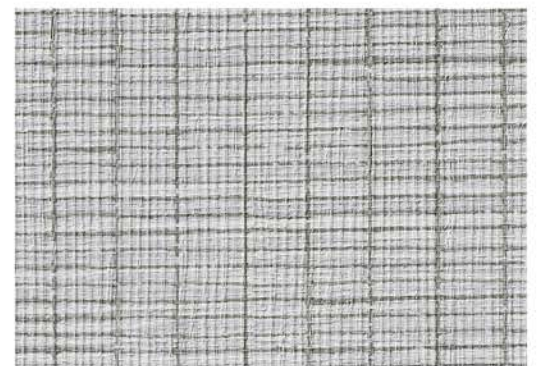
White Satin **BB-PH-02**



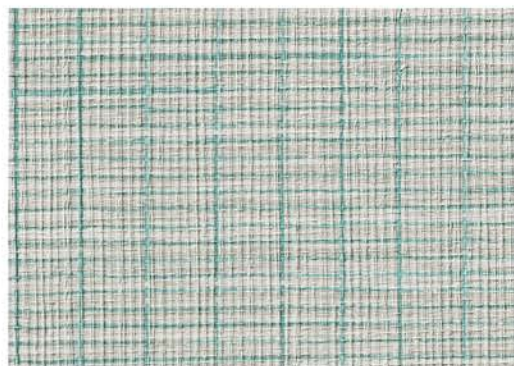
Chalk Lines **BB-PH-06**



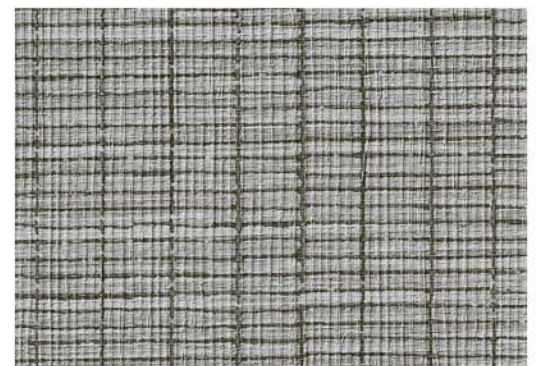
Fresh Dew **BB-PH-03**



Solar Panel **BB-PH-07**



Mint Sage **BB-PH-04**



Steel Blue **BB-PH-08**



Evergreen **BB-PH-05**



Navy Blinds **BB-PH-09**



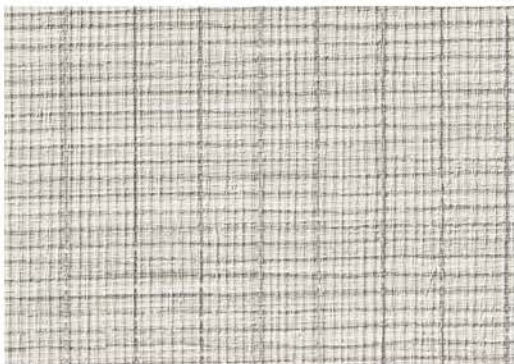
Fine Chiffon **BB-PH-10**



Rose Wine **BB-PH-14**



Creamy Gold **BB-PH-18**



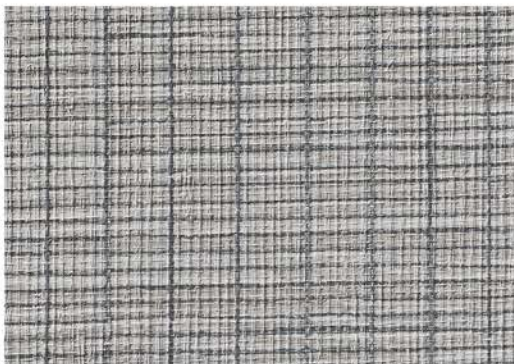
Soft Cashmere **BB-PH-11**



Smokey Taupe **BB-PH-15**



Honey Mustard **BB-PH-19**



Grey Shutters **BB-PH-12**



Toasted Almonds **BB-PH-16**



Acorn **BB-PH-20**



Borderline Ash **BB-PH-13**



Bamboo Python **BB-PH-17**



Cajun Spice **BB-PH-21**



Type II / 20 oz. low voc recycled content

Chalk Lines **BB-PH-06**

Physical Properties

WEIGHT: 20.0 oz. PLY/620 G/PLM 13.3 oz. PSY/451 G/PSM
BACKING: Osnaburg WIDTH: 54"/137cm MATCH: Reverse, random

Meets or exceeds Federal Specification CCC-W-408D
Custom colors, weights, and micro venting available

Product Specifications, Fire Safety & Ratings, Environment & Health
and Warranty is available at www.boltawallcovering.com

Environmental

- Low VOC, California section 01350 IAQ
- 10% Recycled content
- Non-Phthalate
- NSF/ANSI 342 certified
- EPD/HPD
- California Prop 65, no labeling required

Cleanability

Inherent anti-microbial protection
Withstands hospital-grade cleaners & disinfectants
Available as a custom with **INVISICAP** | complete chemical protection